



HART ENERGY

It's  
in  
our  
DMA\*



\*Data & Mapping Assets

*Energy Data, Mapping  
and GIS Services*

# What is our DMA?



Rextag organizes public energy data for optimal business efficiency

*Rextag offers a complete data package on the energy supply chain which includes:*

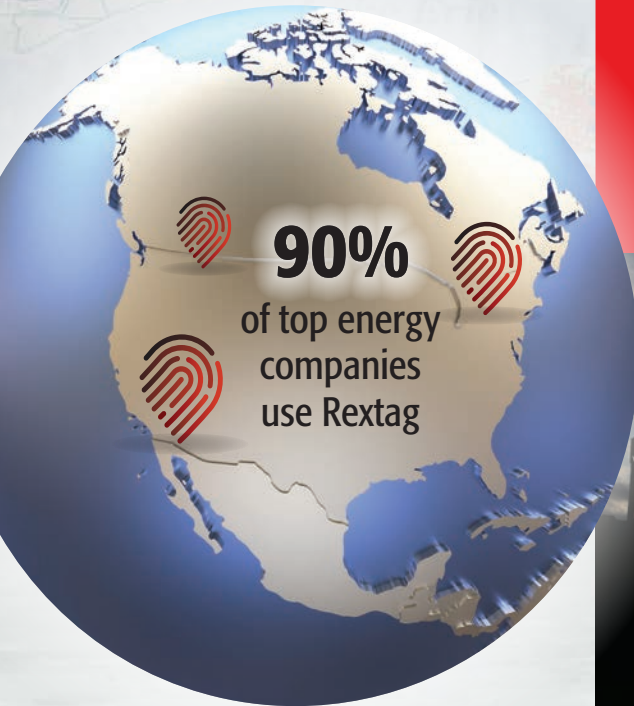
**Upstream oil & gas**  
well permitting, drilling, completions and productions

**Midstream infrastructure assets** for gathering, processing, separation, storage and transport of natural gas, crude oil, refined products, NGLs, LPGs and more

**Downstream** assets in refining, petrochemical and other industrial sectors

**Power and renewables**

- Electric grid generation, transmission and other key data
- Renewable resources including wind, solar, biodiesel, geothermal, RNG (landfill gas, bio digesters), hydrogen, ethanol, and others

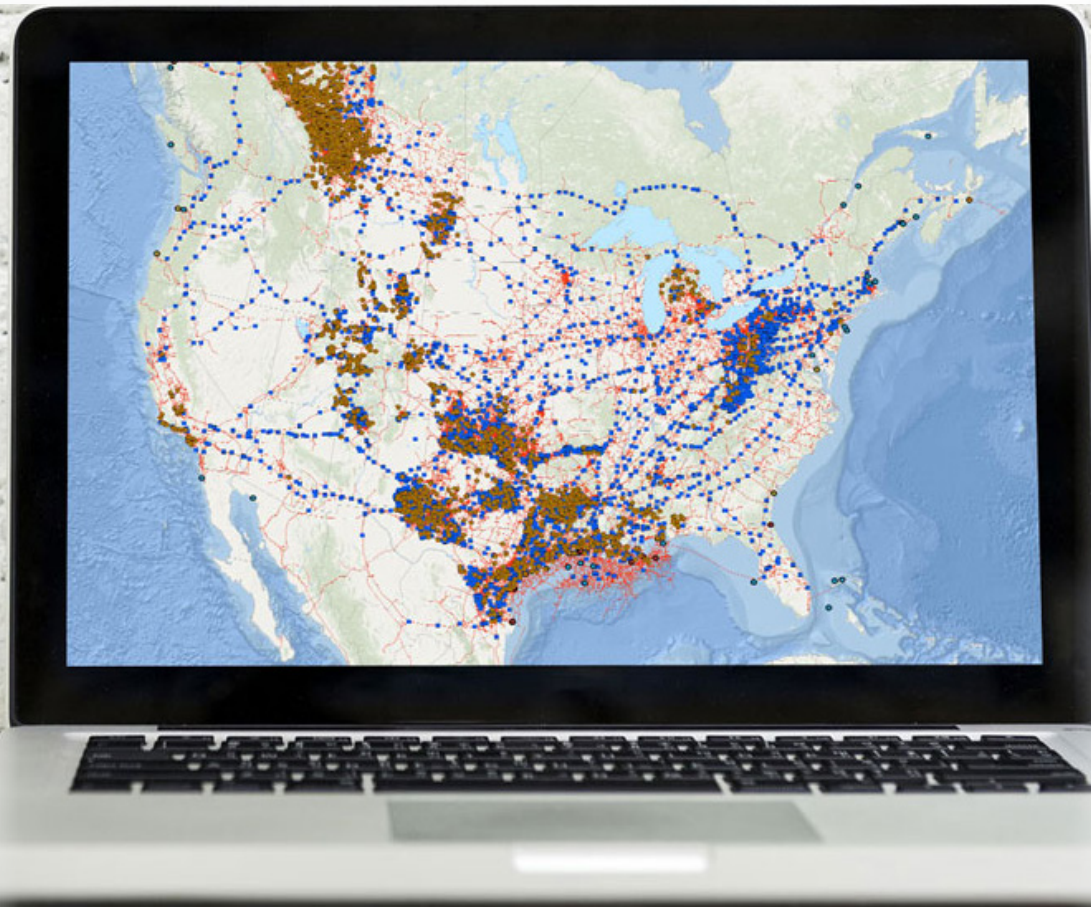


# Who Rextag Helps



Rextag serves professionals engaged with all segments of the energy industry:

- > **Upstream E&P**
- > **Midstream**
- > **Downstream**
- > **Power Generation**
- > **Banking and Finance**
- > **Governments and NGOs**
- > **Engineering and Oilfield Services**
- > **And More!**



We license this data to our customers in convenient formats such as:



Dynamic GIS databases



A web-based mapping application (Energy DataLink™)



API mapping services (WMS/WFS/REST)



SQL server connections, and



Printed maps

# How Rextag Enables Value



Rextag's data services enable value across the entire energy supply chain. For more than 10 years, our customers have been successfully relying on Rextag for multiple different functions:

- > Business Development
- > Assets Operations
- > Sitting, Permitting & Construction
- > Mergers & Acquisitions
- > Regulatory Oversights
- > Project Lead Generation

## Use Case Scenarios

### Upstream

- Evaluate historical oil & gas well production and permits in a specific basin
- Identify midstream assets and players in the vicinity of a proposed E&P operation

### Midstream

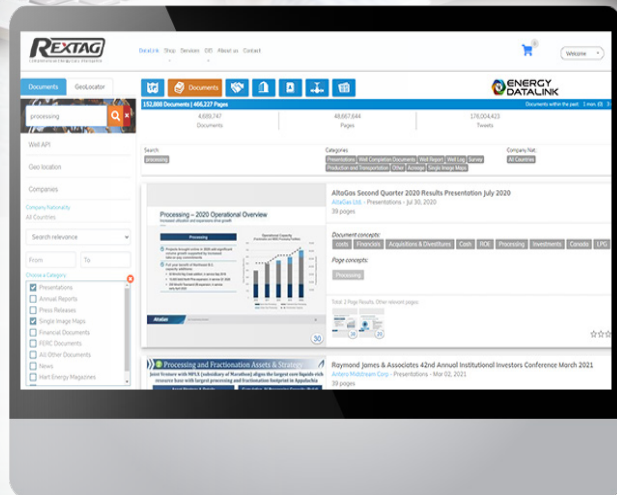
- Utilize detailed pipeline maps for routing new proposed pipelines
- Identify midstream competitors and potential synergistic assets for an acquisition

### Downstream

- Research refined terminals with rail loading and unloading sorted by storage capacity
- Identify petrochemical facilities able to process specific chemicals in your area

### Power & Renewables

- Locate the nearest substation to a potential new solar farm
- Identify voltage and other characteristics of nearby electric transmission lines



# Value Priced Annual Subscription Services



Rextag is provided as an annual subscription and priced by dataset and region.

- Data is updated monthly and new datasets are added periodically to increase the value
- Enables uploading, downloading, saving and sharing of dynamic maps and queries



## Upstream

- > Oil And Gas Wells
- > Acreages
- > Directionals



## Natural Gas

- > Natural Gas Pipelines, including Meter & Pricing Points
- > Compressor Stations & Processing Plants
- > Gas Storage & LNG Terminals
- > CNG Filling Stations



## Crude Oil, Refined Products & Other Liquids (NGLs, LPG, HVL)

- > Pipelines
- > Terminals Refineries
- > Pump Stations
- > Processing Plants & Oil Refineries
- > Petrochemical Facilities
- > LPG Filling Stations



## Miscellaneous Pipelines

- > Including Water (Fresh Salt/Brine, Disposal), CO<sub>2</sub>, H<sub>2</sub>, N<sub>2</sub>, Ammonia and others



## Power & Renewables

- > Electric Transmission Lines
- > Electric Substations
- > Power Plants, including Renewable Sources
- > Energy Storage
- > Wind Turbines
- > Renewable Natural Gas Sources
- > Methane Landfills
- > Hydrogen Plants
- > Geothermal Sites
- > Ethanol Biorefineries, Biodiesel and Oilseed Plants
- > Renewable Alternative Fuel Filling Stations

## Additional Data Provided to all Subscribers

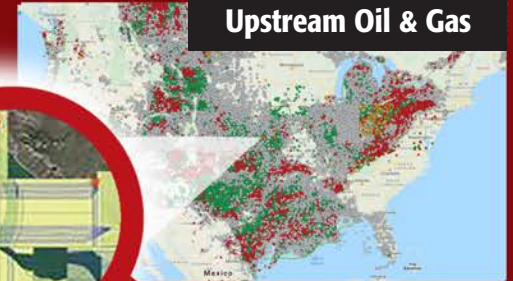
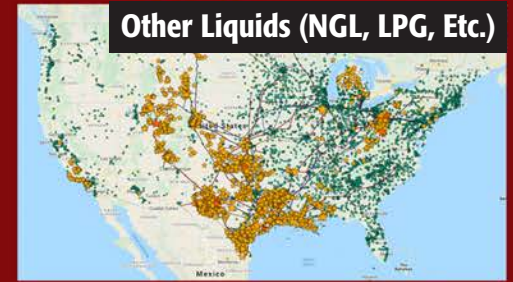
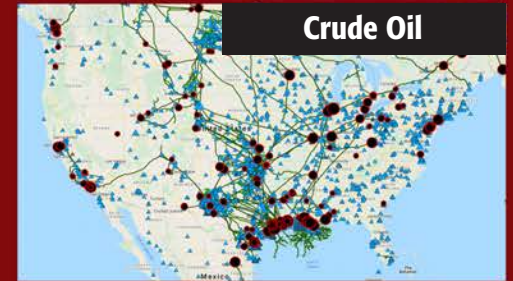
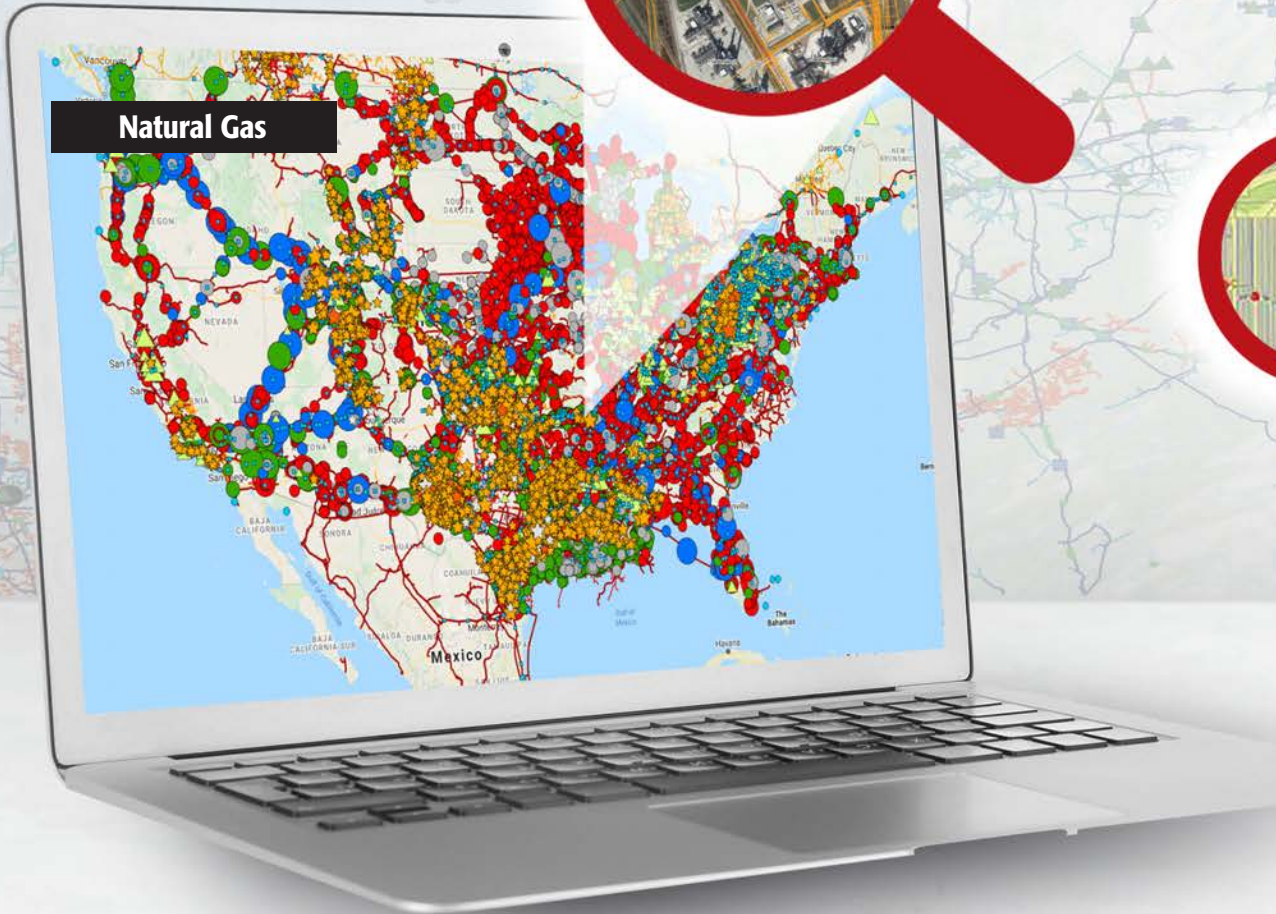
- > Parcel Owners' Data
- > Weather Services: Rain, Storms, Temperatures, Forecasts, etc.
- > Auxiliary Datasets
  - Energy Layers (basin, plays, etc.)
  - Cultural Layers (political boundaries, roads, etc.)
  - Environmental Layers (wetlands, floodways, elevation, etc.)
- > Energy Library with over 5 million documents
- > Investor Presentation
- > Annual Reports
- > Permits
- > Searchable A&D transactions
- > Corporate entities, affiliations, financials, asset stats, etc.



# Energy Datasets Available



Rextag offers the most accurate and complete global energy data service for the Energy Industry.



# Connect with the Rextag team



We make adoption of Rextag into your business a smooth and seamless transition.



**Rextag Energy Data**  
619-349-4970  
[mapping@hartenergy.com](mailto:mapping@hartenergy.com)

[www.rextag.com](http://www.rextag.com)

HARTENERGY



[www.rextag.com](http://www.rextag.com)